

## **Focus/AP studio- project 2: DESIGN CONCEPTs: Juxtapose , Scale contrast, Color:**

Select a subject matter that is **important to you**- Select something you can study from life and/or multiple photos

Consider your subject matter and how you can use juxtaposition and Scale contrast to create meaning/metaphor. Juxtapose your subject in an unlikely setting- or a setting that is not 'natural' but adds to the expression of your piece. Or juxtapose your subject with another object/subject

### **Visual Journal:**

---

- Brainstorm, collect images, sketch out ideas, start with what you are interested in and passionate about, where your aesthetic interests are,
- Make at least one connection to an art movement – Select your own example of another artists' work to analyze-
- Make sure to label all your research with why you selected it, how its helping you!
- Complete as many thumbnail studies as needed to plan your composition- What format- Square, rectangle, etc., how large?

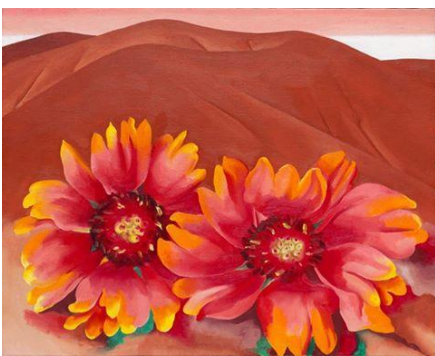
### **Media:**

**First year Focus:** Refine your technique with Oils- participate in demonstrations- practice, practice, practice! Do a series of mini Oil paint studies of your subject matter before starting your final-

**2<sup>nd</sup> year Focus/AP Studio:** Select media of your choice- Incorporate specific color to add \_\_\_\_\_ to your expression

**All planning DUE: END OF QUARTER 1: November 6<sup>th</sup>**

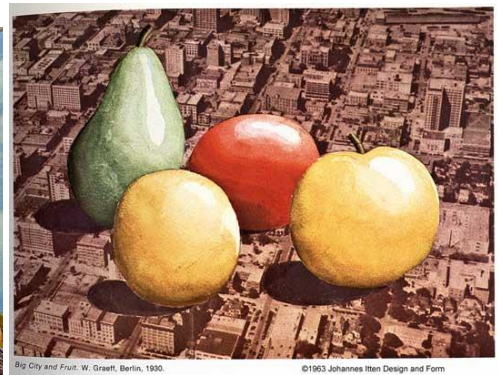
**Final Project Due: Thursday 11/20 (That is 2 weeks of work time!)**



Georgia O'Keeffe 1986 Red Hills with Flowers



Surrealism- Magritte



W. Graett, Berlin 1930- Big City and Fruit

- See more at: <http://www.studentartguide.com/gallery/distorted-angry-beasts#sthash.WW3P6gAf.dpuf>



In the juxtaposition of the goldfish with an aerial environment, I created a surreal and impossible scene which represents the fantastical part of our mind where the conscious is unable to attain. Done with Copic Markers on marker paper. - See more at: <http://www.studentartguide.com/gallery/distorted-angry-beasts#sthash.WW3P6gAf.dpuf>



Kelly O'connor- Contemporary artist:

<http://kellyoconnor.carbonmade.com/>

**Tulips And Towers** Anita Lambert got down low and placed these small tulips in juxtaposition to the towers behind them in Marina City, Florida. Exposure with a Canon EOS 7D and an EF-S 18-135mm lens was f/5.6 at 1/200 sec.  
© Anita Lambert



**In the shadows, Christopher Park, Greenwich Village, York City, 2006** <http://www.pbase.com/pnd1/juxtaposition&page=5>



Clayton Thiel

*Important components of his sculpture are technical contrast and the elemental. Juxtapositions between smooth and rough surfaces, light and dark, are superbly and subtly applied. The basic elements of water, air, earth and fire are present and are transmitted strongly to the viewer.*

