

# Anatomy for Artists:

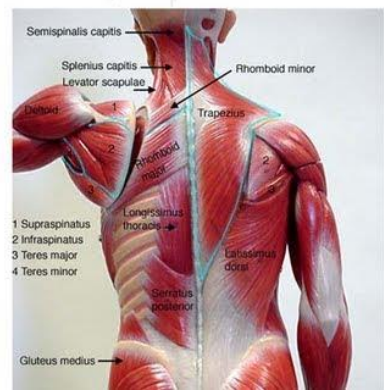
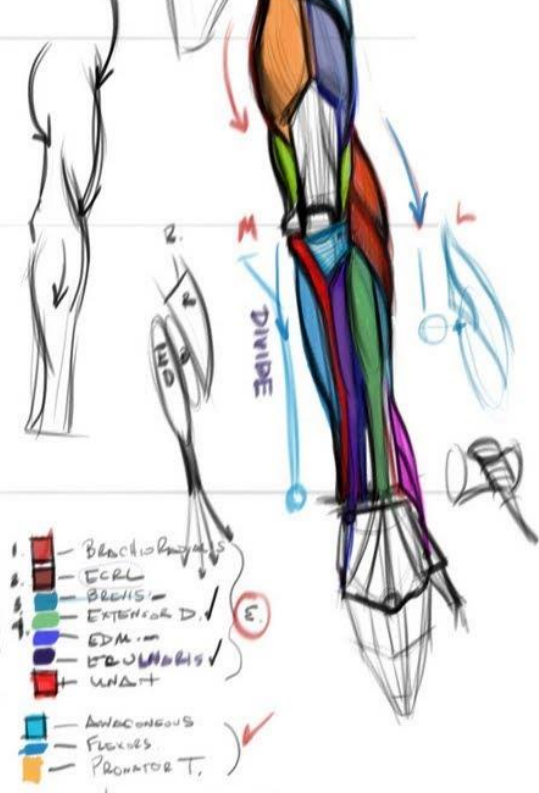
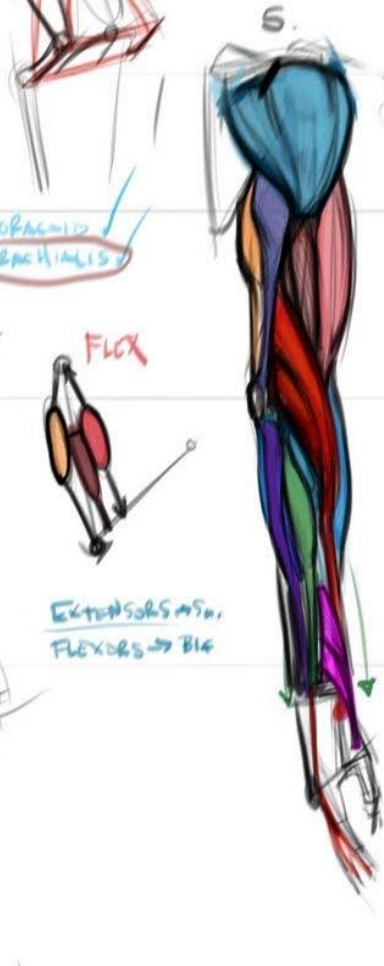
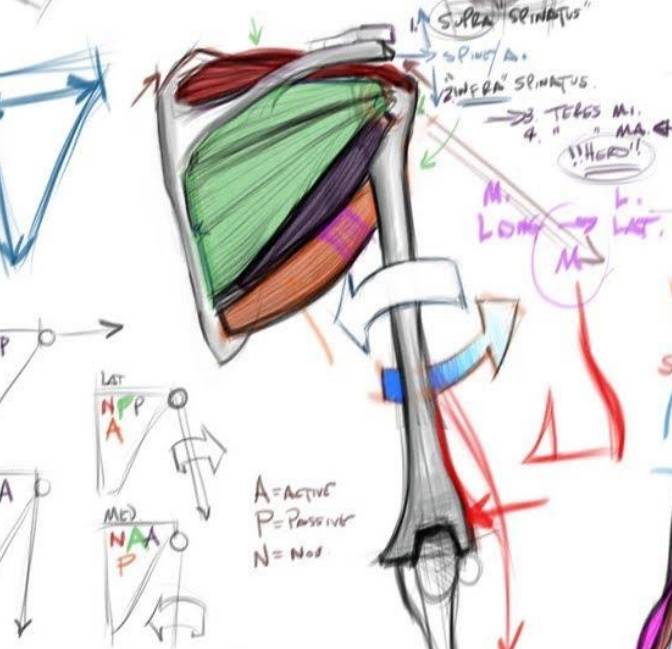
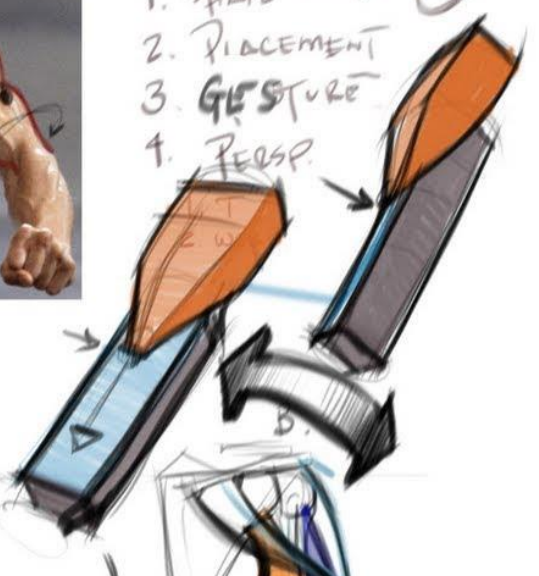
Want to get better at figure drawing?

Study Anatomy!

- **Sketchbook assignment 1: Due Tuesday 9/22**
  - Pick a part of anatomy to study in depth- (become Leonardo!) Create a double page spread of multiple studies from a variety of angles
  - Use the images in this hand out as a guide.
  - Pick a full figure to study from one of the images

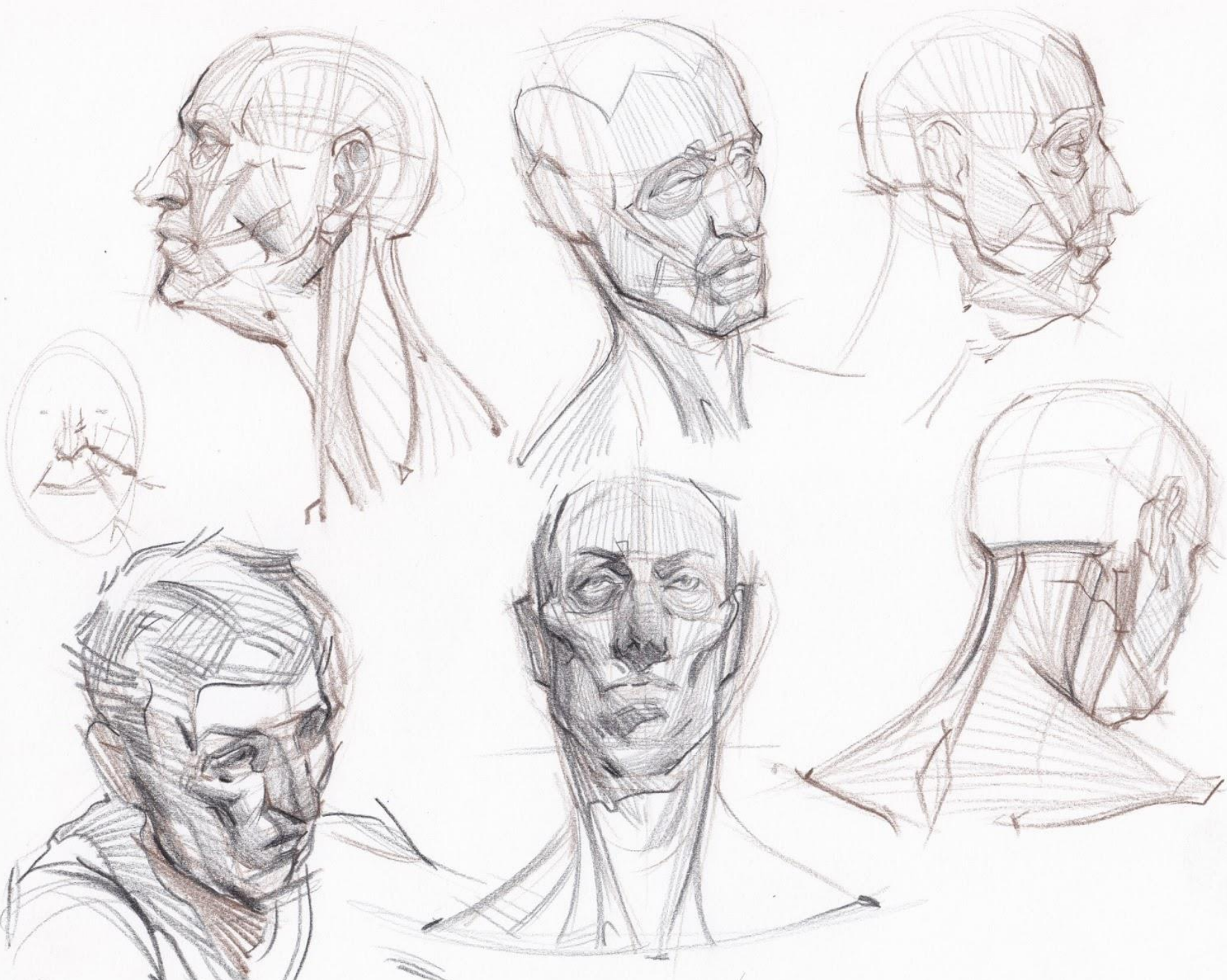


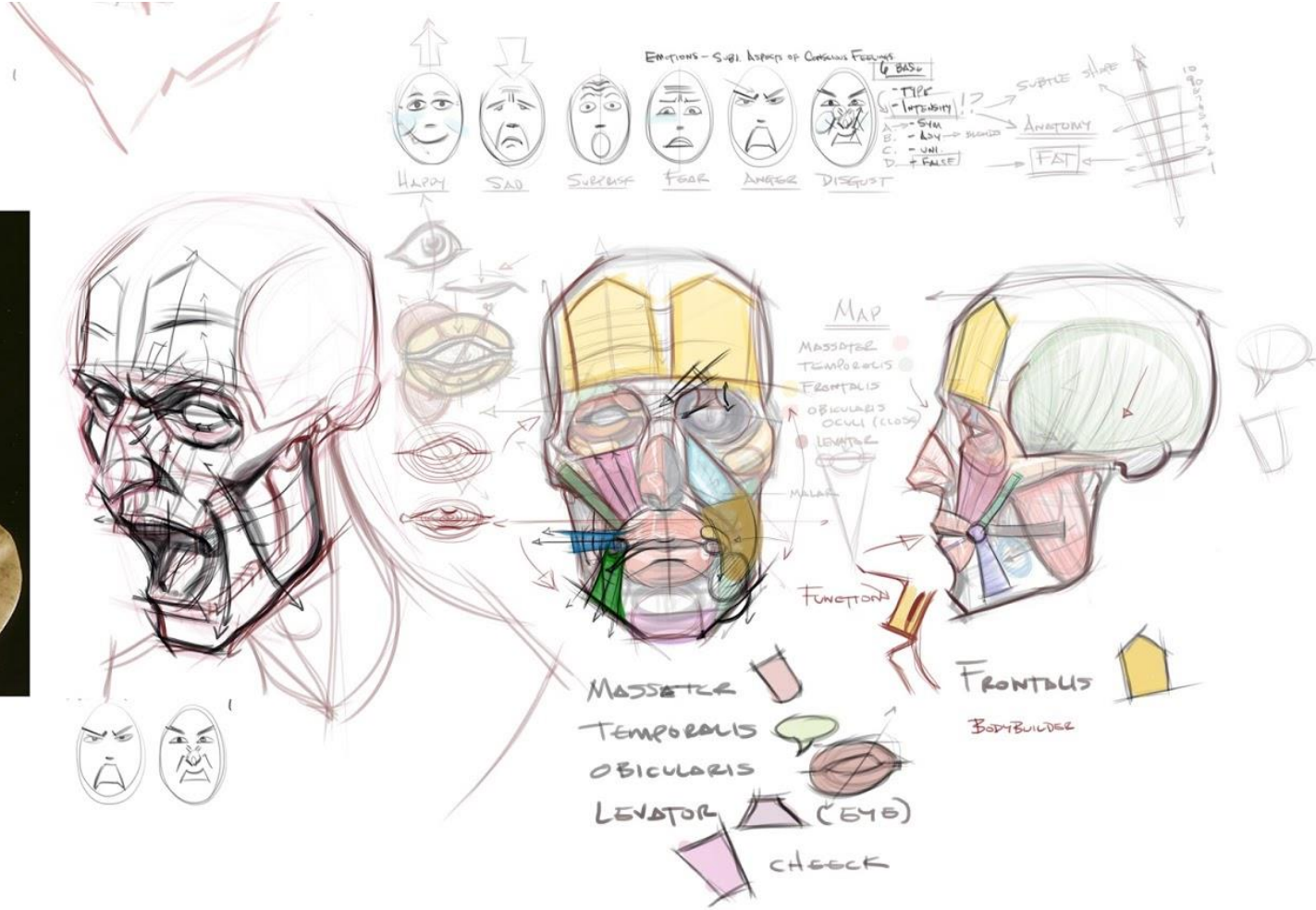
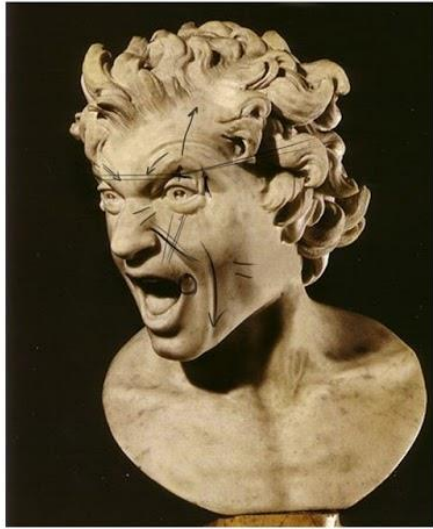
1. PLACEMENT
2. PLACEMENT
3. GESTURE
4. PERSP.



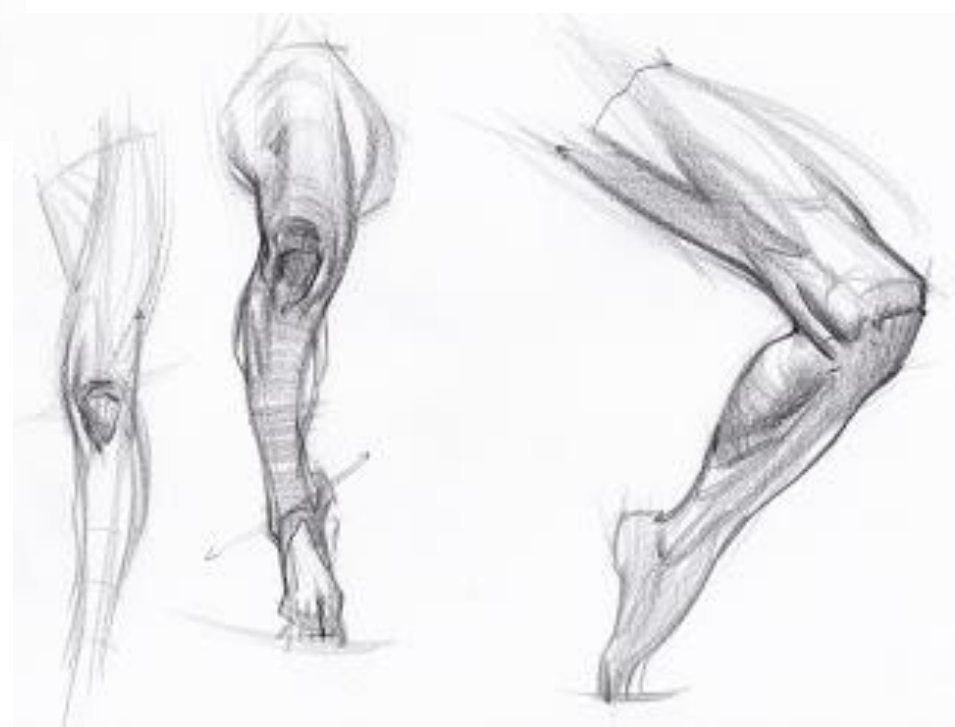
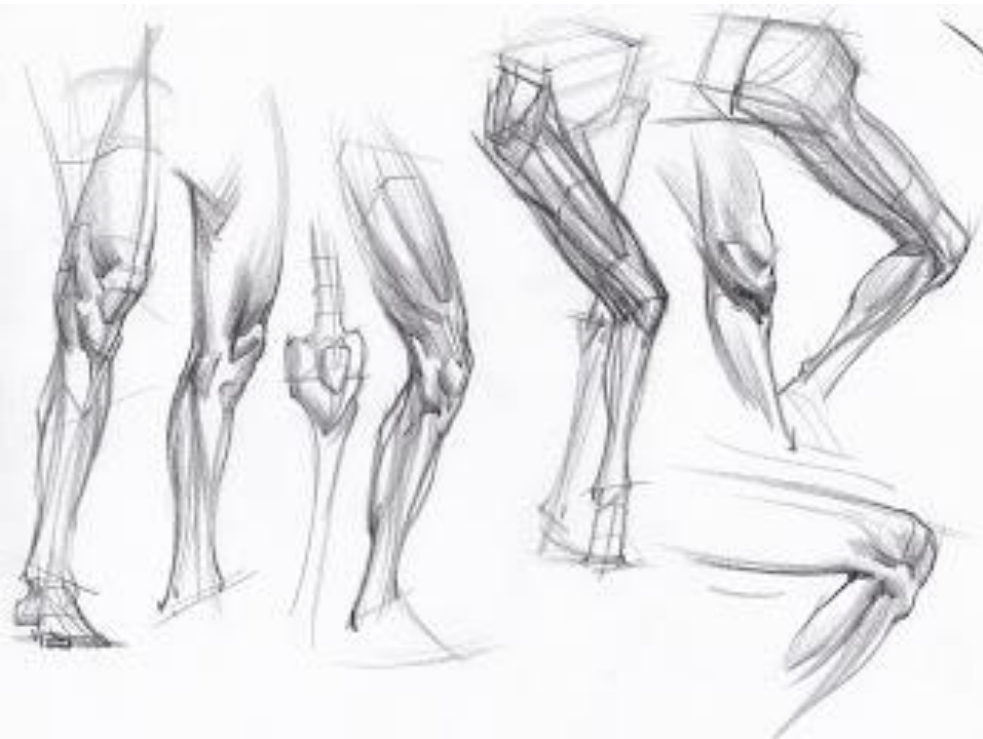
1. BRACHIORADIALIS
  2. BRACHIALIS
  3. EXTENSOR D.
  4. EDM.
  5. BRACHIORADIALIS
  6. ULNAR
- AWAKE/CONSCIOUS  
 - FLEXORS  
 - PRONATOR T.
- THUMB → ABDUCTOR  
 - FINGER → EXTENSOR





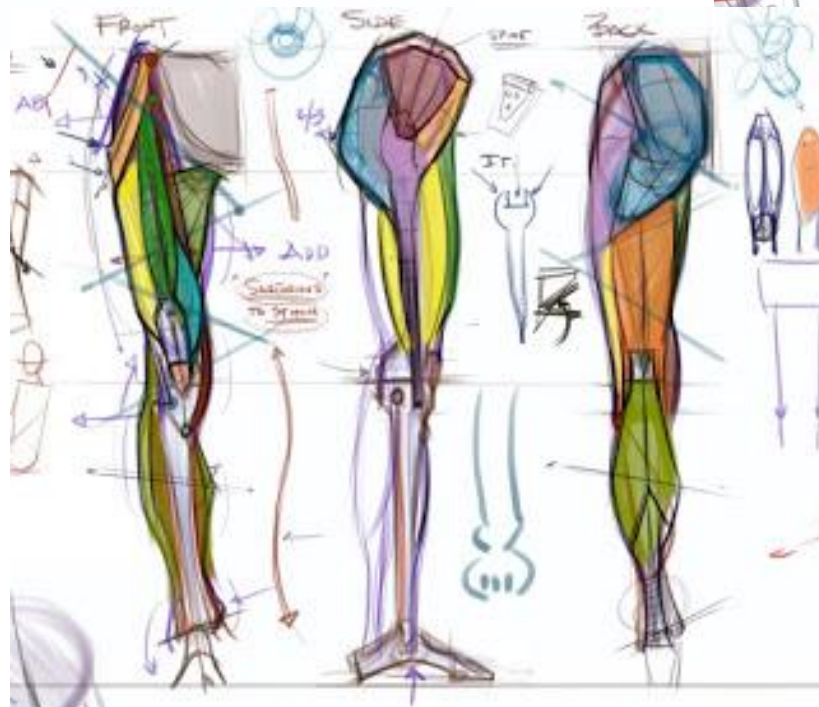
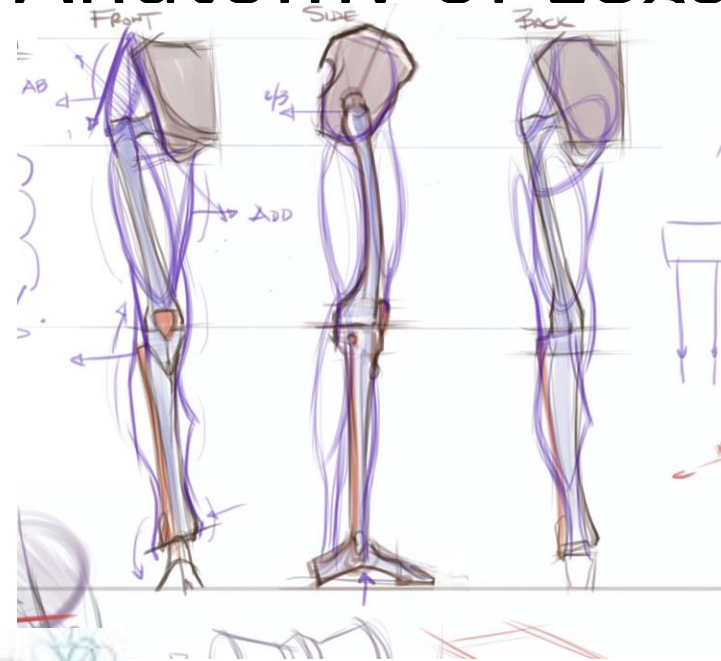
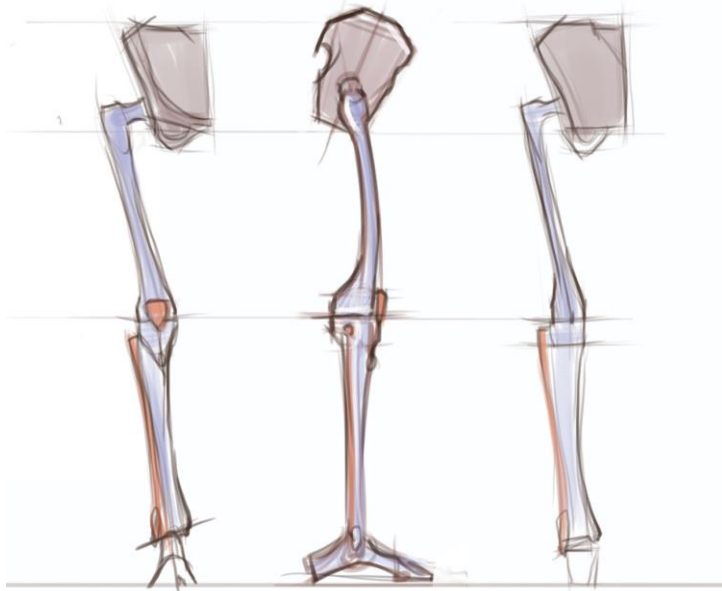








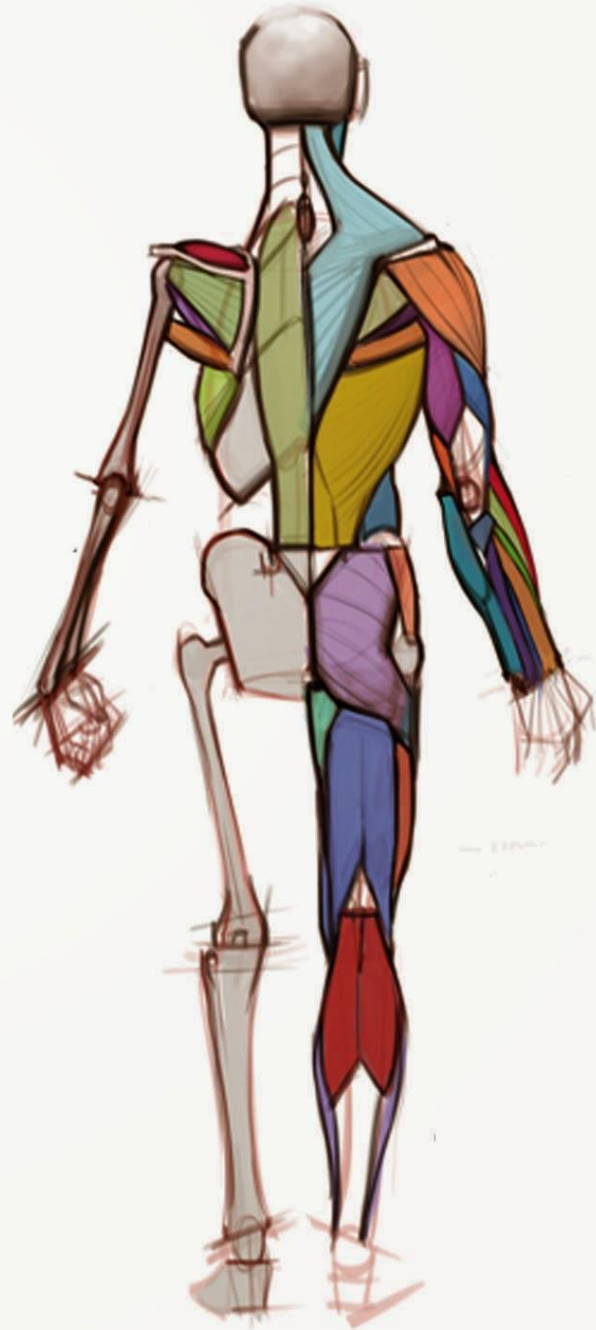
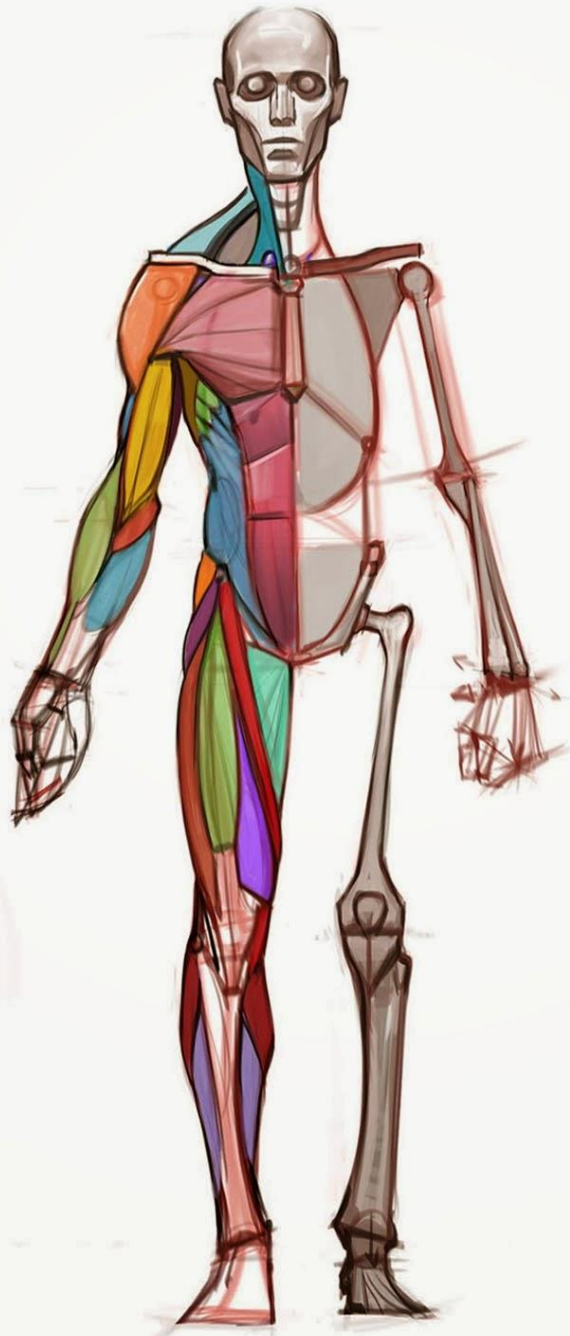
# Process of building Anatomy of Legs





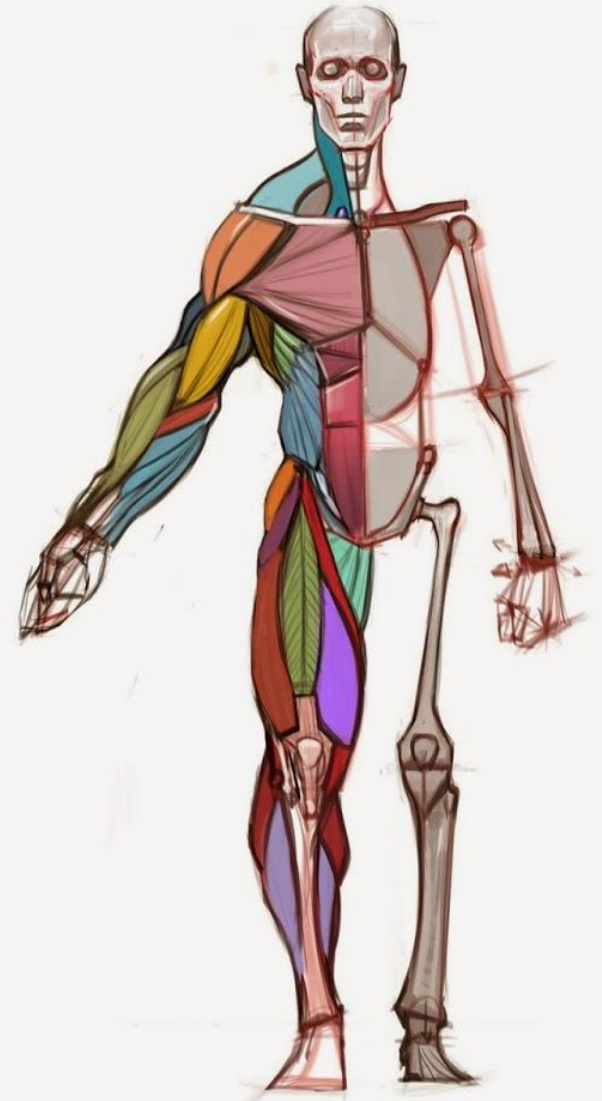




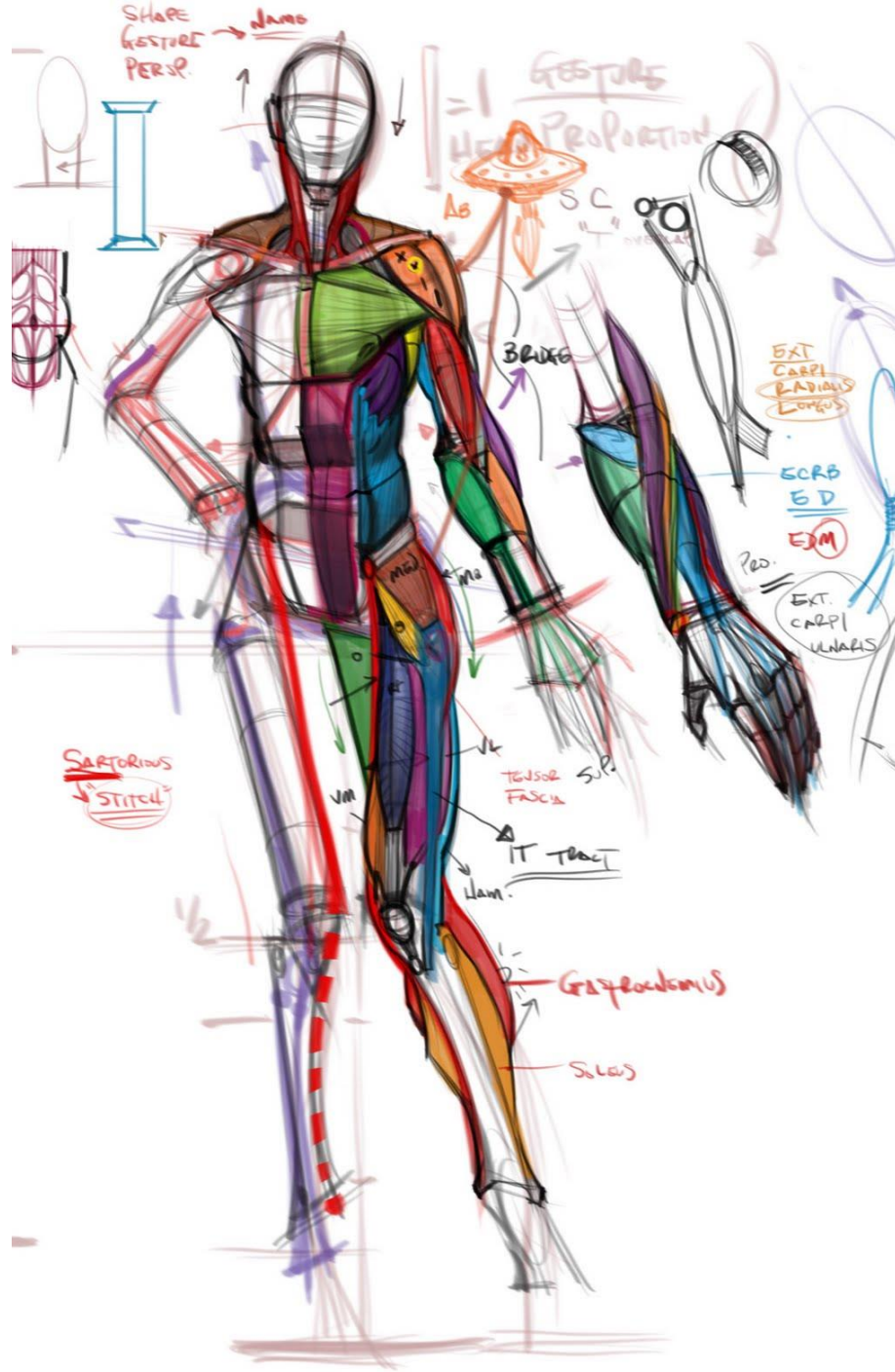


TORSE  
MEMBRE  
MEMBRE  
MEMBRE  
MEMBRE

# Body Types

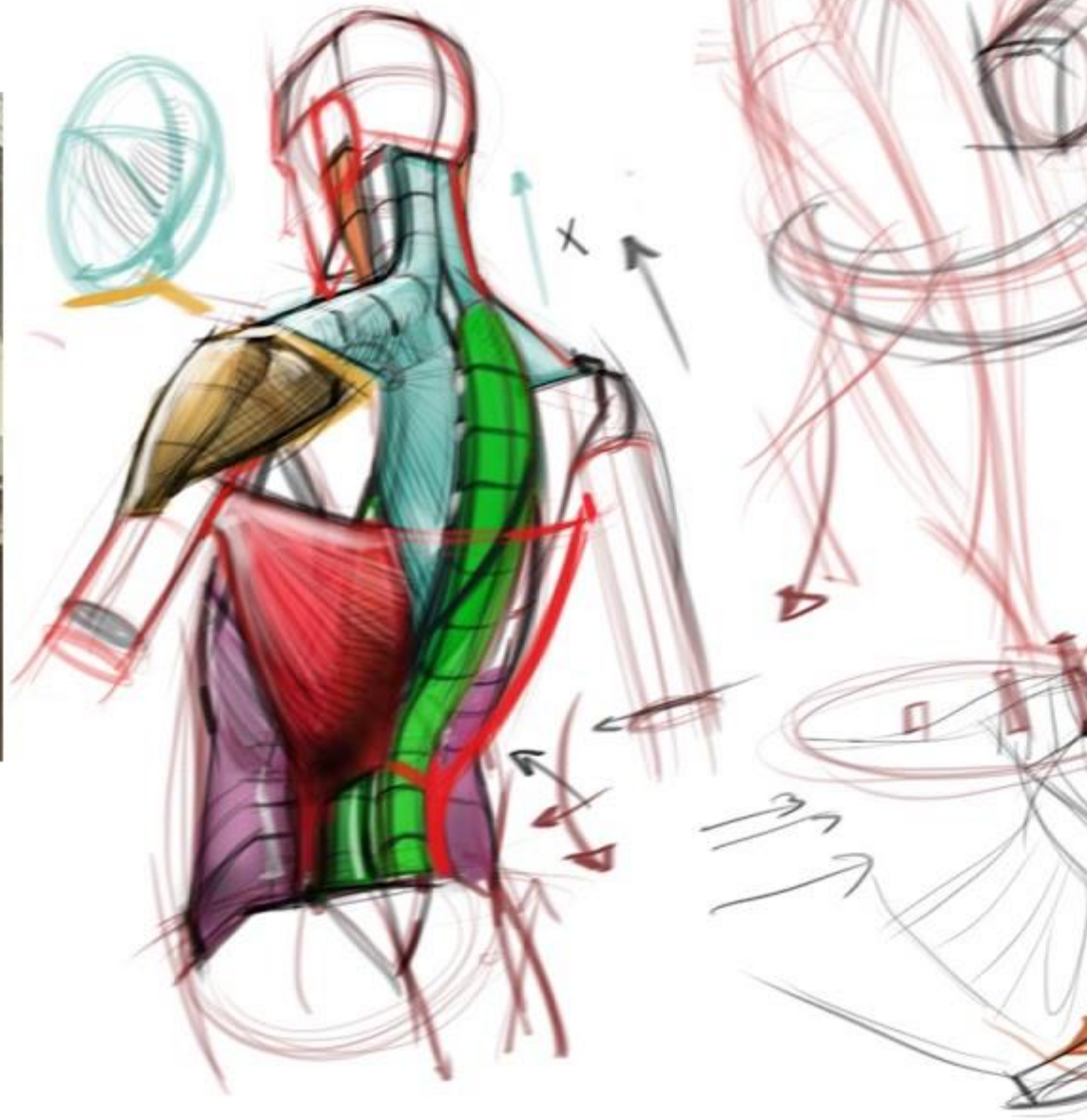














- 1 SIZE
- 2 PLANE LINES
- 3 PO & AN

Connections  
CS  
W → T



- DR
- C
- A
- D
- W
- B
- A
- E
- R
- C
- T

WEIGHT  
↓ TILT  
↓ SLOPE  
↓ CONNECT

1/2

1/2





# Anatomical Studies by Leonardo Da Vinci

Proportion, Harmony, Dynamic movement

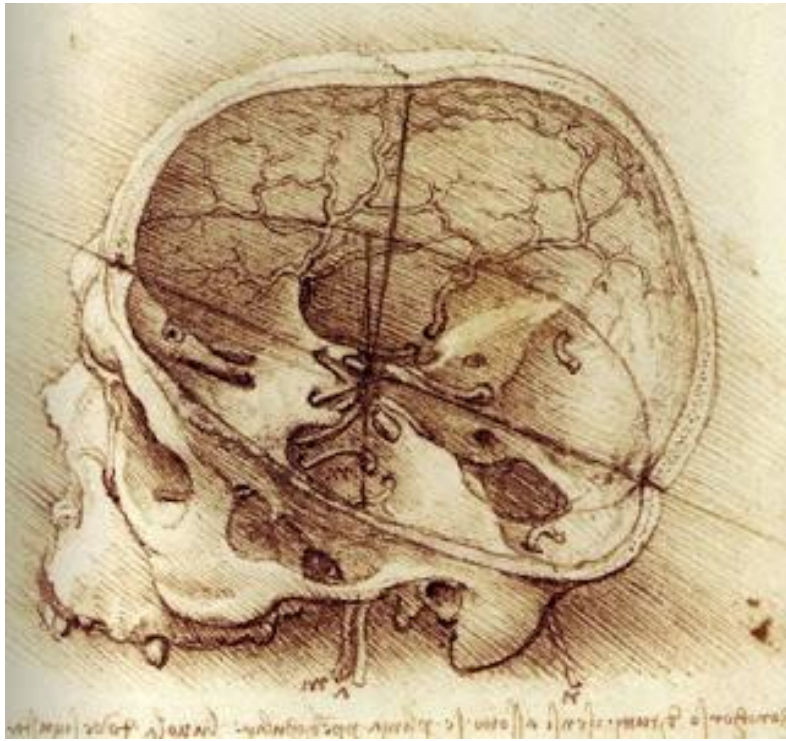








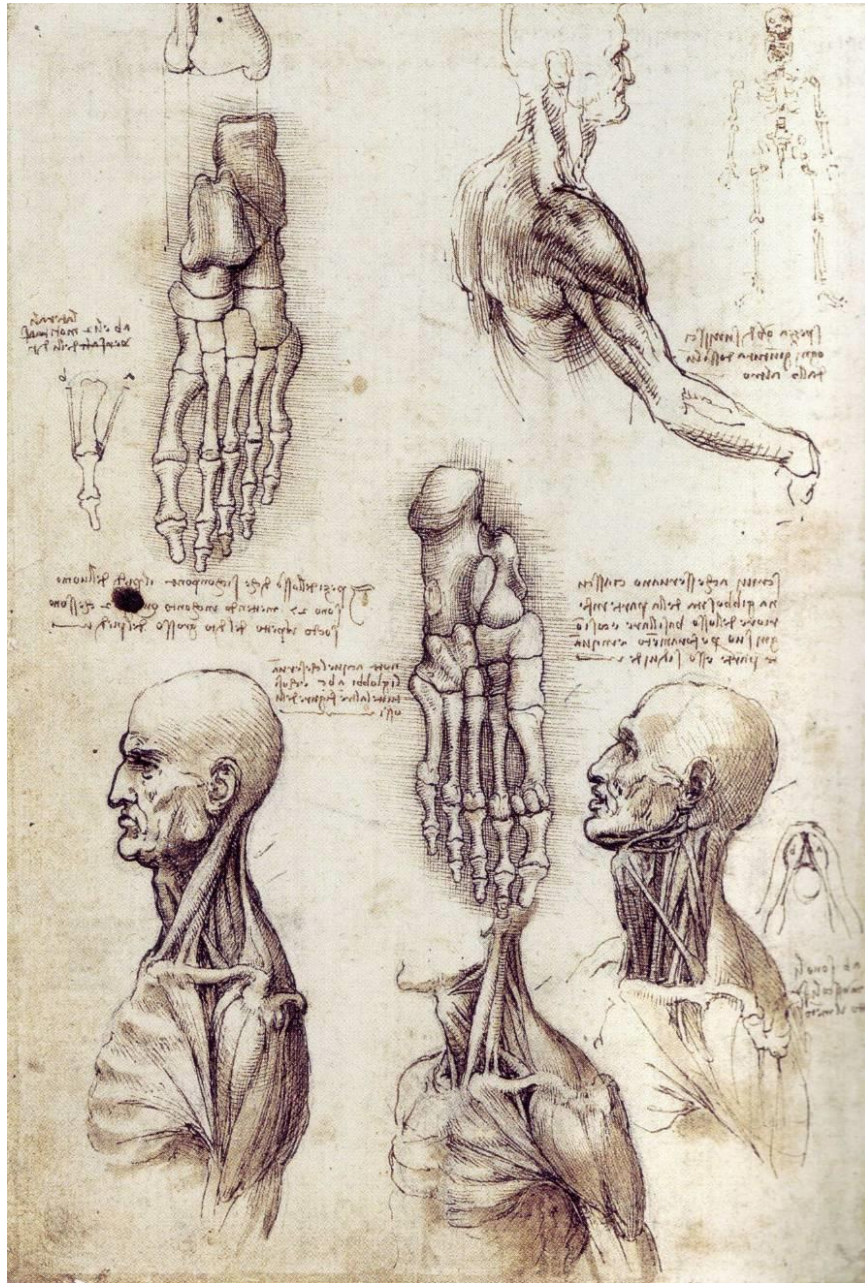




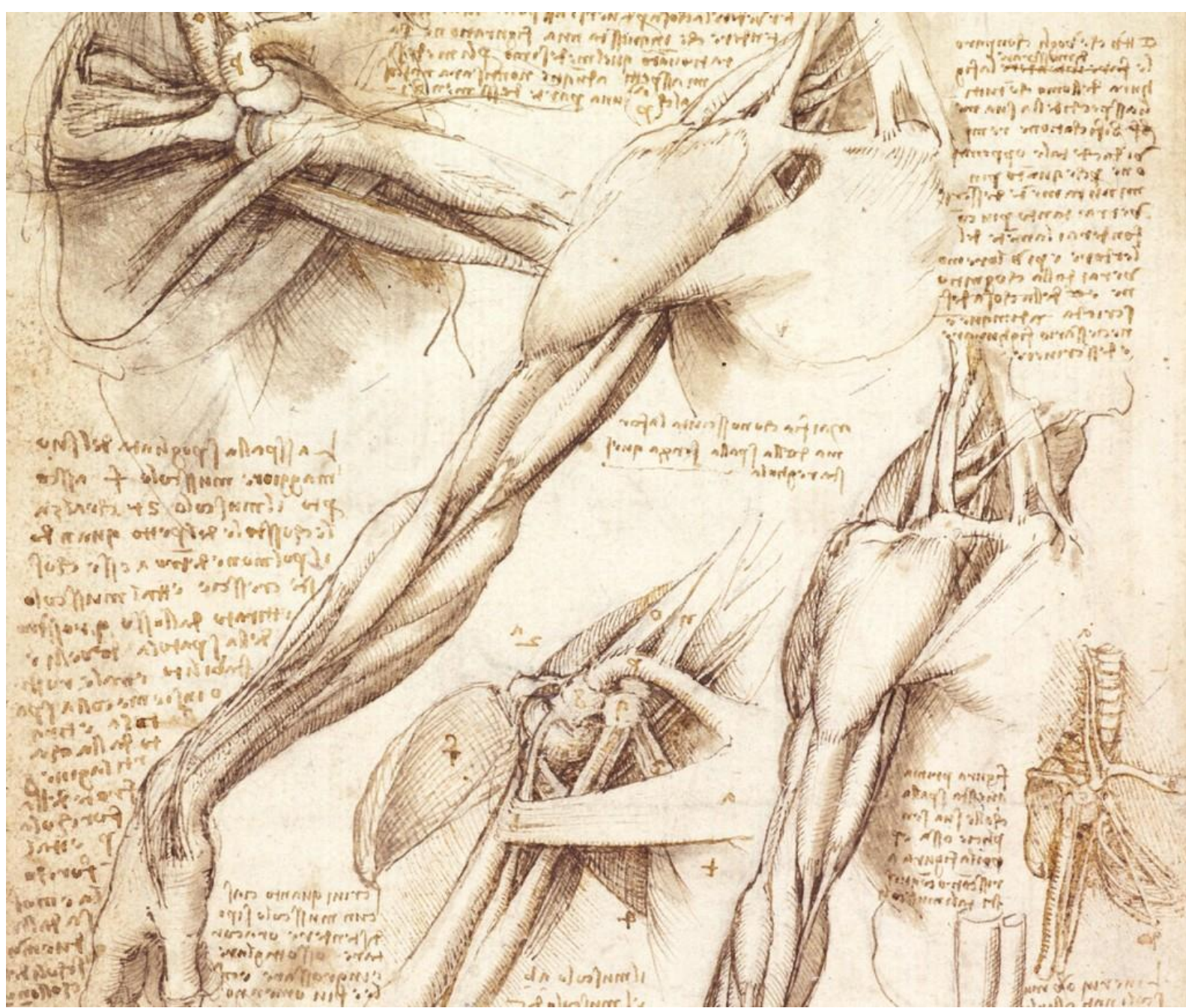










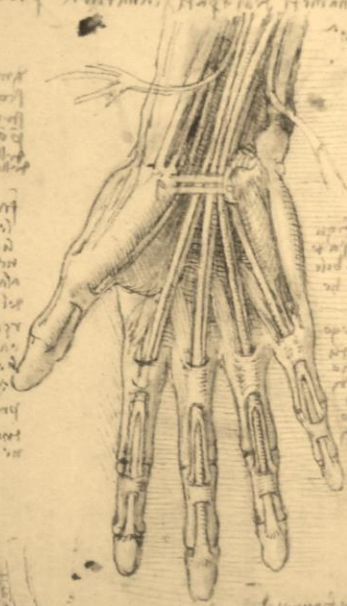




Handwritten text in the upper left corner, likely describing the anatomical structures shown in the adjacent drawings.



Handwritten text in the upper middle section, positioned between the two main hand drawings.



Handwritten text in the upper right corner, adjacent to the small branching diagram.

Vertical column of handwritten text on the left side of the page, between the two main hand drawings.

Vertical column of handwritten text in the middle section, between the two main hand drawings.



Vertical column of handwritten text on the right side of the page, between the two main hand drawings.



Handwritten text in the middle left section, positioned between the two main hand drawings.

Handwritten text in the middle right section, positioned between the two main hand drawings.



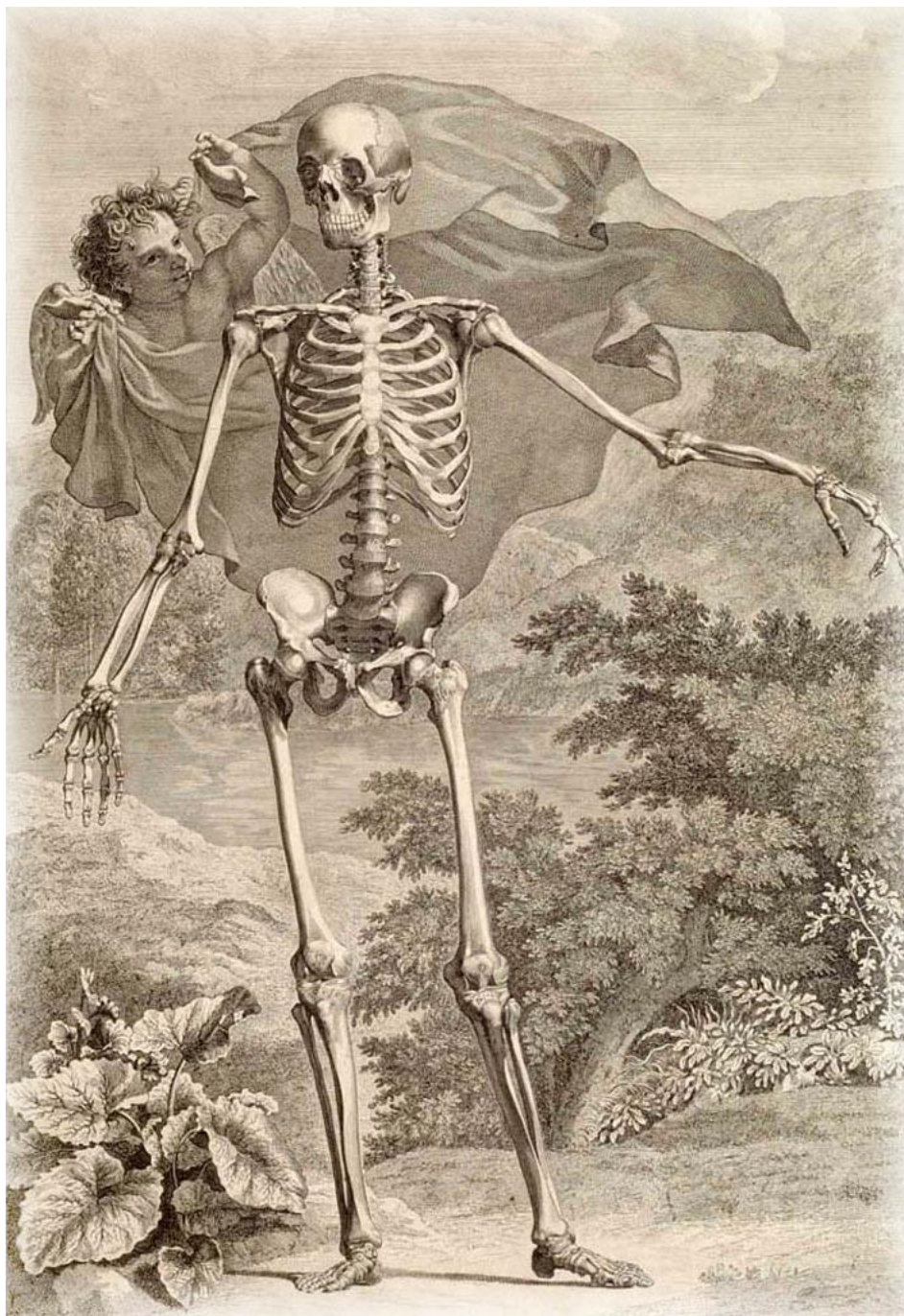
Handwritten text at the bottom left corner of the page.

Handwritten text at the bottom middle section of the page.

Handwritten text at the bottom right section of the page.



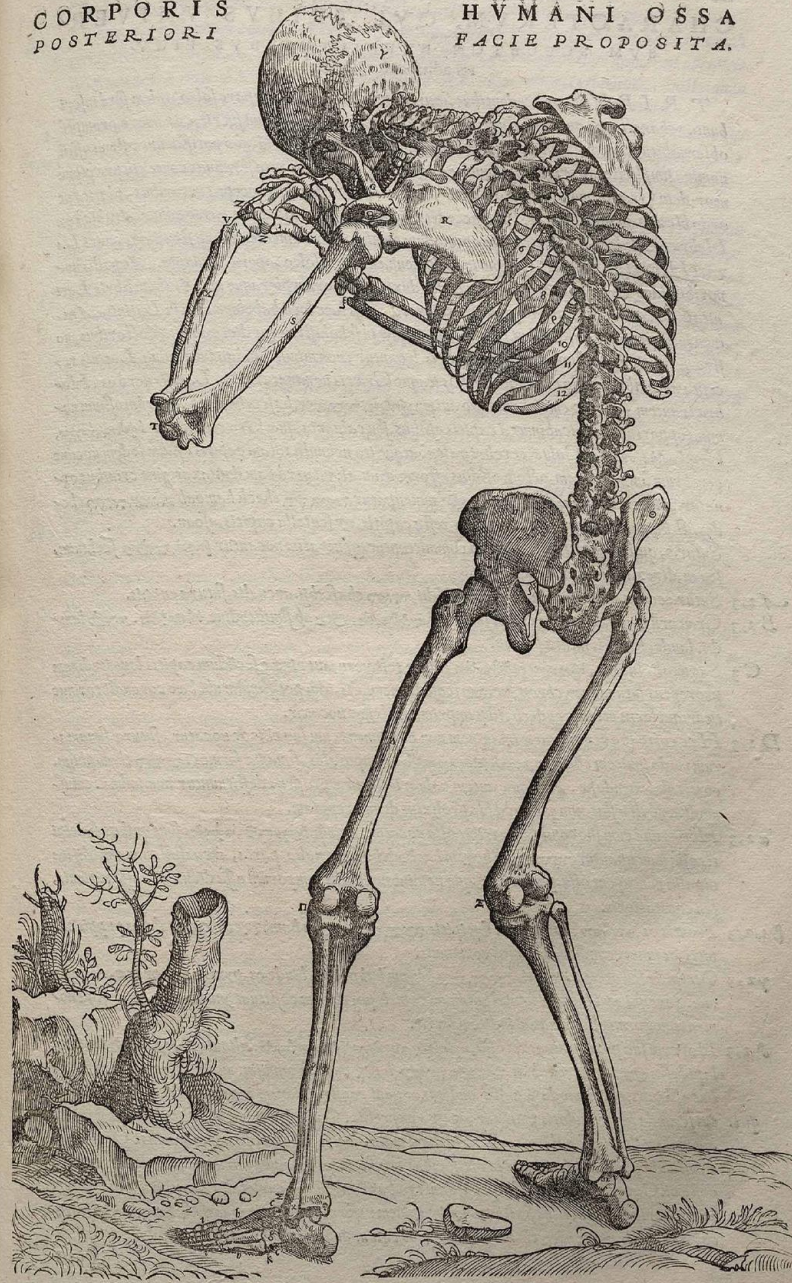






CORPORIS  
POSTERIORI

HVMANI OSSA  
FACIE PROPOSITA.





SKELETON

